
Technical sheet

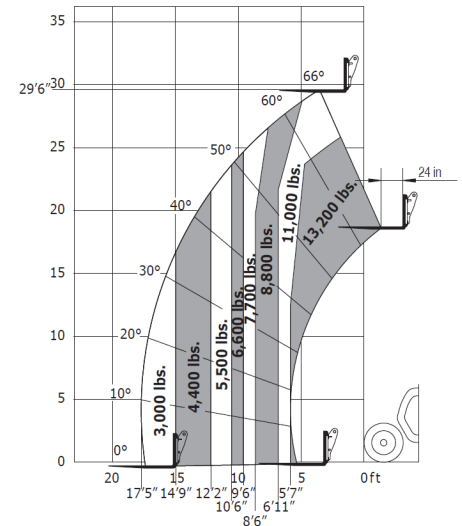
MLT 961-145 L

Telehandlers



Capacities	Metric	Imperial
Max. capacity	6000 kg	13,200 lbs
Max. lifting height	9 m	29 ft 6 in
Max. outreach	5.30 m	17 ft 5 in
Reach at max. height	1.10 m	3 ft 7 in
Weight and dimensions		
Unladen weight (with forks)	11800 kg	26015 lbs
m4 - Ground clearance	0.45 m	2 in
l2 - Overall length to carriage (with hitch)	6.10 m	20 ft
y - Wheelbase	3 m	9 ft 1 in
b4 - Overall width of cab	0.99 m	3 ft 2 in
b1 - Overall width	2.48 m	8 ft 2 in
h17 - Overall height	2.53 m	8 ft 4 in
Wa1 - External turning radius (over tires)	4.30 m	14 ft 1 in
Standard tires	500/70 R24 Bibload	500/70 R24 Bibload
Engine		
Brand	John Deere	John Deere
Environmental norm	Stage IV / Tier 4 Final	Stage IV / Tier 4 Final
Model	PWL 4045	PWL 4045
Number of cylinders - Cubic capacity	4 - 4500 cm ³	4 - 275 in ³
Power	141 hp / 104 kW	141 hp / 104 kW
Max. torque	540 Nm at 1600 rpm	399 ft.lbs at 1600 rpm
Laden drawbar pull	9300 daN	20,907 lbs
Reversible fan	Standard	Standard
Cooling system	4 radiators (water + intercooler + hydraulic oil + transmission oil)	4 radiators (water + intercooler + hydraulic oil + transmission oil)
Transmission		
Type	CVT	CVT
Max. travel speed	40 km/h	25 mph
Parking brake	Automatic negative parking brake	Automatic negative parking brake
Service brake	Wet disc brakes	Wet disc brakes
Hydraulics		
Hydraulic pump type	Load sensing pump	Load sensing pump
Hydraulic flow - Pressure	200 l/min - 270 bar	52.8 gpm - 3916 psi
Flow sharing distributor	Standard	Standard
Tank capacities		
Hydraulic oil	153 l	40 US gal.
Fuel	135 l	35 US gal.
Diesel Exhaust Fluid (DEF)	12 l	3 US gal.

Load Chart with Forks



Load chart based on 24 inch (600 mm) load center per ANSI B56.6.

STANDARD FEATURES

- 3 Mode Hydraulic Steering
- Engine Block Heater
- Frame Leveling (+/- 8 Degrees)
- Comfort Steering System
- ECO Stop
- Boom Tip Aux. Hydraulic System
- Easy Connect System
- Complete Road Lights
- LED Work Lights
- Easy Link Module
- Enclosed Cab w/ heater and A/C
- JSM Joystick Control

OPTIONAL FEATURES

- Return Line to Tank
- Dual Aux. Hydraulic Lines
- 12V to Boom Tip
- Cold Weather T32 Hydraulic Fluid
- Video System



Manitou North America, LLC.
 PO Box 179 • West Bend, WI 53095
 Tel: 262-334-9461 • Fax: 262-338-7517
www.manitou.com



This brochure describes versions and configuration options for Manitou products which may be fitted with different equipment. The equipment described in this brochure may be standard, optional or not available depending on version. Manitou reserves the right to change the specifications shown and described at any time and without prior warning. The manufacturer is not liable for the specifications given. For more information, contact your Manitou dealer. Non-contractual document. Product descriptions may differ from actual products. List of specifications is not comprehensive. The logos and visual identity of the company are the property of Manitou and may not be used without authorization. All rights reserved. The photos and diagrams contained in this brochure are provided for information only.
 MANITOU BF SA - Limited company with board of directors - Share capital: 39,547,824 euros - 857 802 508 RCS Nantes